



February 12, 2025

Mayor, Council, Citizens  
The City of Van Alstyne  
152 North Main Dr.  
Van Alstyne, TX 75495

In this month's City Manager Report, I will update you on several projects the city has been working on. This past month has been a whirlwind of activity, much to share with you in the few pages available.

Eula Umphress / Hynds Park opened for business on February 5, 2025. This beautiful 24-acre park features a 3-acre fishing pond, walking trails, pergola, playground and large green space. The park is amazing, I would encourage you to see this facility for yourself. Not quite ready for your fishing poles, the pond has yet to be stocked. Parks & Recreation plans to stock the pond in late March, just in time for the official ribbon cutting ceremony scheduled April 10. The park is located just north of the Georgetown Development and between Kelly Lane and Dallas Street. Parking lots are available on both Kelly and Dallas. Looking for a beautiful sunset? This park may be the best spot in town!



The Van Alstyne Senior Center is getting a new home. This is very exciting news for this very busy facility. As part of the cities continuing efforts to make old buildings new again, the former WA Denton Cafeteria located on the former Columbia College Campus will be repurposed and become the new Senior Center. The 4,000sf facility will be fitted with a commercial kitchen, and two ADA restrooms. The project is in the early stages of design, timelines for construction have yet to be determined, this said, it is the goal of the city to have the new facility ready for occupancy during fiscal year 2025.



TxDOT has announced a “Call for Projects” allowing cities to apply for grants to improve transportation alternative systems. Better put, this grant program offers funding for trails. Also known as *Shared Use Path or SUP*, the trail system adds walkability to a community and the ability to bike without the worry of vehicular traffic. The city has been successful in securing grants in the past with two Shared Use Path projects completed, one underway and a fourth in design. This month, the city will submit a “Phase 5” proposal to TxDOT requesting a \$2.8M grant to install a 5,800 linear ft section of trail outlined below. The proposed new trail section will travel south along the east side of Kelly Lane from the new Umphress/Hynds Park until it reaches County Line Road. At County Line Road, the trail turns east and ultimately reaches Forrest Moore Park. A crosswalk is planned along Kelly Lane to allow residents of Tinsley Meadows to safely cross this roadway. Connecting our trail system to parks remains our objective as it improves the quality of life for all our citizens.

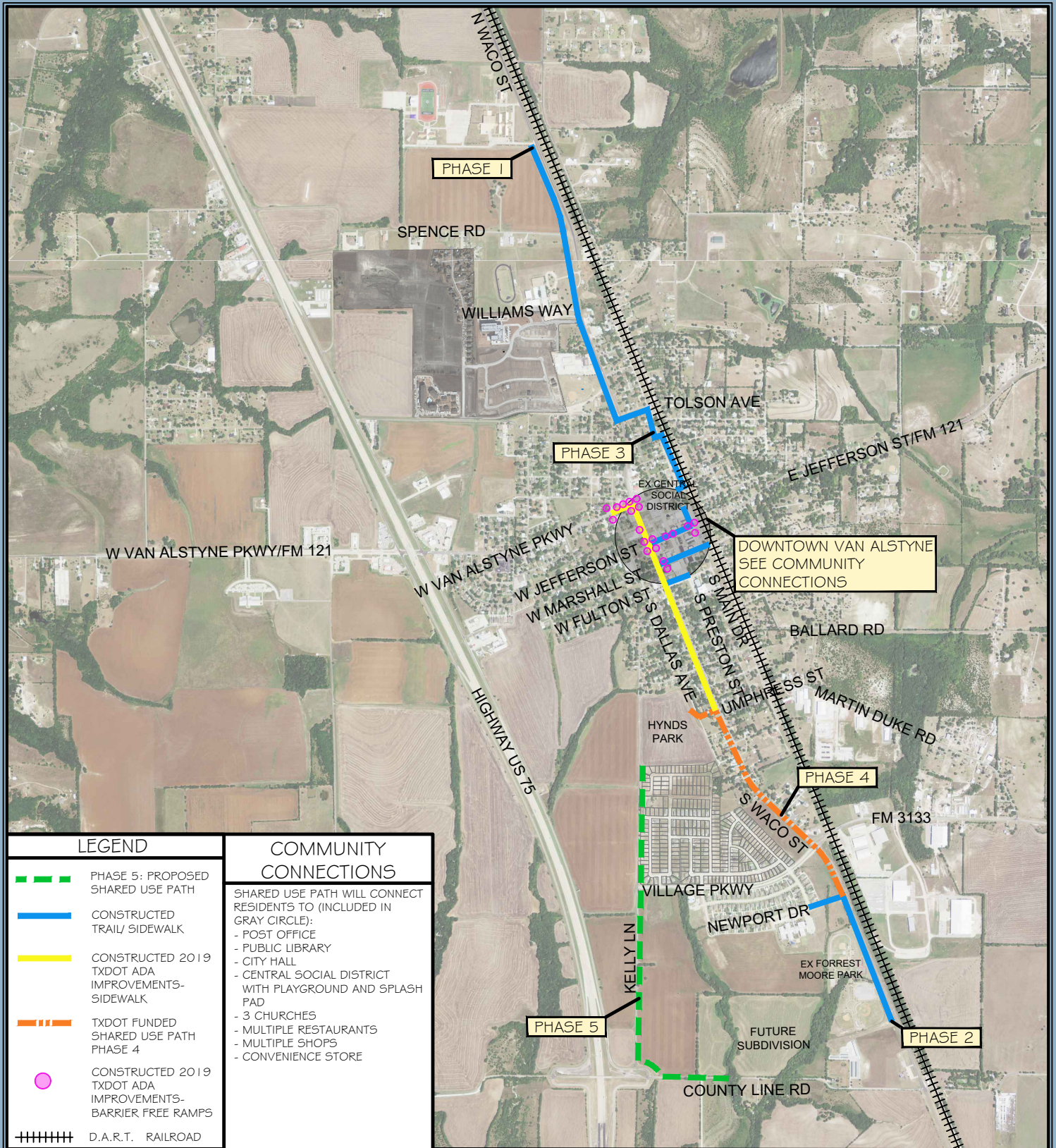
(See full map of Pedestrian and Bike Trail Plan on following page)

Respectfully,

A handwritten signature in blue ink, appearing to read "Lane H. Jones", with a large, sweeping flourish at the end.

Lane H. Jones





#### LEGEND

- PHASE 5: PROPOSED SHARED USE PATH
- CONSTRUCTED TRAIL/ SIDEWALK
- CONSTRUCTED 2019 TXDOT ADA IMPROVEMENTS- SIDEWALK
- TXDOT FUNDED SHARED USE PATH PHASE 4
- CONSTRUCTED 2019 TXDOT ADA IMPROVEMENTS- BARRIER FREE RAMPS
- +++++ D.A.R.T. RAILROAD

#### COMMUNITY CONNECTIONS

SHARED USE PATH WILL CONNECT RESIDENTS TO (INCLUDED IN GRAY CIRCLE):

- POST OFFICE
- PUBLIC LIBRARY
- CITY HALL
- CENTRAL SOCIAL DISTRICT WITH PLAYGROUND AND SPLASH PAD
- 3 CHURCHES
- MULTIPLE RESTAURANTS
- MULTIPLE SHOPS
- CONVENIENCE STORE

Van Alstyne, Texas



City of Van Alstyne

Shared Use Path - Hynds Park to County Line Road

**VAN ALSTYNE CENTRAL PEDESTRIAN & BIKE TRAIL**



0 2000'

1" = 2000'

ORIGINAL PRINT: 8.5"x11"

February 2025